

SHARP®



IMAGESEND  
AND SHARPDESK

*The Complete Network  
Scanning Solution*

## ImageSEND and Sharpdesk™ software: Powerful document distribution solutions to enhance your workflow.

With the ability to scan a document, convert it to digital information, and distribute it to multiple users and locations, Sharp's network scan-enabled Digital Imagers™ deliver more than just copy and print features. Network scanning gives you the ability to:

- Distribute documents quickly and easily
- Reduce overnight mail costs
- Store, back-up and retrieve documents with minimal effort
- Utilize contents of stored documents for other purposes
- Reduce need for filing cabinets and associated floor space cost

And, with Sharp's ImageSEND technology and Sharpdesk software, your Digital Imager becomes a powerful document management system that can streamline your workflow—saving time and money.



**Digital**  
**IMAGER™**  
Advanced Workgroup System

## Effortless Document Distribution with Sharp's ImageSEND



ImageSEND is Sharp's portal to document distribution, and is available on Sharp's AR-M280, AR-M350, and AR-M450 series Digital Imagers. With ImageSEND, you can scan a document and send it instantly to one of six destinations—with just the touch of a few buttons on the Imager's control panel. ImageSEND destinations include:



**Send to Desktop** allows you to send scanned files directly to your desktop and store them in your favorite file formats. Sharpdesk complements this feature by enabling you to easily manage these files.



**Send to E-mail** saves time and allows you to send scanned images directly to any e-mail address.



**Send to FTP** enables you to scan to any File Transfer Protocol (FTP) site or server that allows uploading. Easily store and access files no matter where you are.



**Send to Fax** enables you to scan and fax right from the control panel.\*



**Send to i-Fax** enables you to send documents worldwide to another T-37 Internet fax machine at virtually no cost—and in considerably less time—as compared to a phone line.\*



**Send to Group** allows you to send the same document to multiple e-mail, fax and internet fax destinations—simultaneously.\*

Regardless of which model Imager you own, you can access the power of network scanning with Send to Desktop, Send to E-mail, and Send to FTP capability. For a complete list of models that support network scanning, please see the back cover.

## One-Touch Keys

One-touch keys on the Imager's intuitive LCD panel make it easy to select a destination quickly and easily. One-touch keys are easily created right from your desktop, allowing you to personalize the LCD panel for maximum productivity.



Sharp's Network Scanner Tool\*\* utility allows you to create and manage Send to Desktop destinations. Sharp's Export-Import Utility enables you to export and import e-mail addresses—thereby eliminating the need to re-key them to create other destinations. And with the Imager Home Page, you can create and manage e-mail, FTP, Fax, i-Fax, and Group destinations—right from your desktop.

\*optional Facsimile Expansion Kit required

# Easily Manage and Integrate Scanned Documents with Sharpdesk™

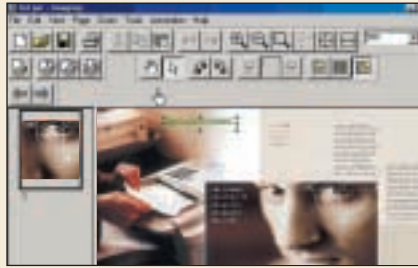
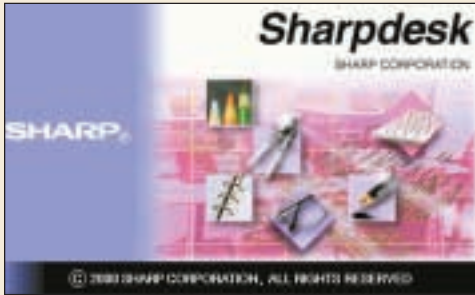
Sharpdesk™ is a powerful, flexible, and intuitive desktop document management application that integrates your business documents regardless of the format. Scan paper documents and images directly to Sharpdesk from your scan-enabled Digital IMAGER, or drag and drop existing files on your PC into Sharpdesk. Use it to organize, annotate, edit, combine and retrieve your files before you print, e-mail, fax or archive them.

Sharpdesk's Network Scanner Tool enables you to receive scan jobs from your networked IMAGER—without having to send them through your file or mail server. By simply selecting a Send to Desktop One-Touch Key, your hard copy will be automatically scanned, sent, and stored in your PC. With Sharpdesk, you get the tools you need to give your workflow unprecedented power, speed and efficiency.

## Sharpdesk 3.0 Key Features

- **Receive:** Automatically receive, open and save scans directly from your Sharp Digital IMAGER or any TWAIN Compliant Scanner
- **Manage:** Store, organize and manage documents of any size or type—right from your PC desktop
- **Search:** Find and retrieve scanned documents or any electronic file quickly and easily with the built-in search engine
- **Output:** Drag and drop files and scanned documents to printers, fax machines, or e-mail services available to your PC
- **View:** View files in native formats as thumbnail images in more than 200 file types including TIFF, JPEG, BMP and common Office Suite formats
- **Compose:** Combine files of different types in a single document for easy distribution with Composer
- **OCR:** Convert hard-copy documents into editable files with built-in OCR capability
- **Image Editing:** Edit images and photographs with a range of drawing tools and touch-up filters with Image Editor

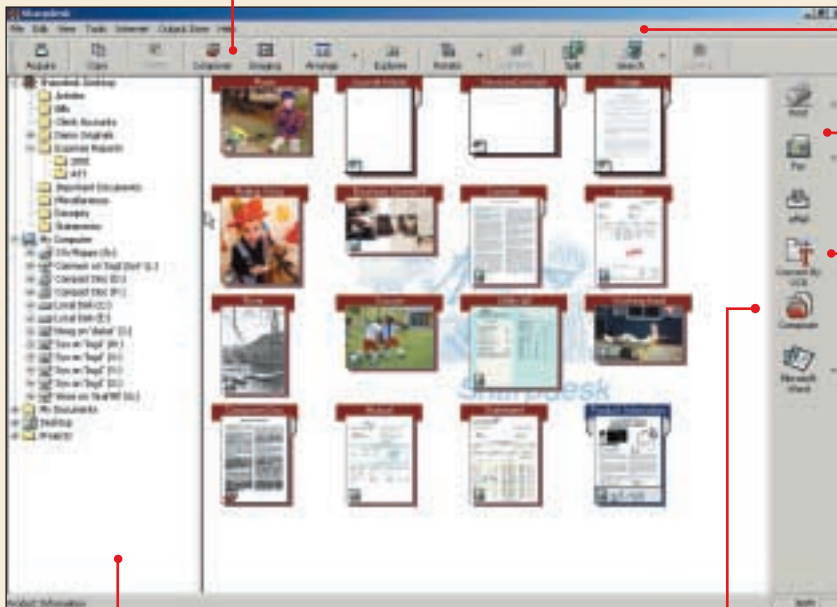
# Sharpdesk at-a-Glance



**Image Editor** enables you to view and edit image files with just a few key clicks. With a variety of editing functions, it's easy to remove marks from a photograph, straighten page orientation, adjust brightness and contrast, and add text or other comments directly to your scanned document.



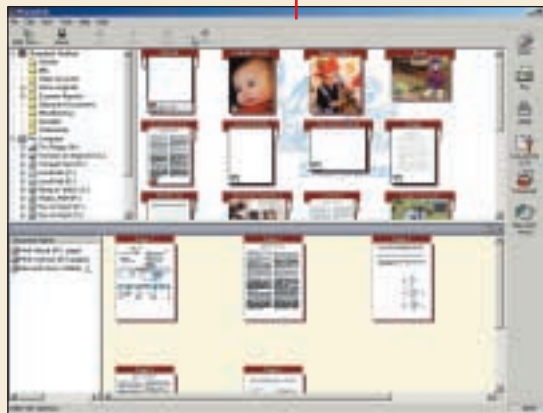
**Search** enables you to quickly locate and retrieve any file on your PC. Sharpdesk's built-in search feature will automatically index your selected files, not just the scanned documents. This makes the search process quick and easy, with the results presented in a friendly format.



**Output** your scanned document by dragging it to the desired icon in the Output Zone. You can archive, print, e-mail, or fax the file; or open the file in your favorite software.

**OCR (Optical Character Recognition)** software will convert your text document into a digital file that can be edited with most word processing programs. OCR saves time by eliminating the time-intensive process of key-stroking of documents. Convert single or multi-column documents, and ignore or make notations of picture placements in the converted document.

**The Sharpdesk Desktop** is familiar and easy to use. Scanned documents appear in the Sharpdesk window as thumbnails for easy browsing. Sharpdesk recognizes over 200 types of files including TIFF, JPEG, BMP and common office suite formats.



**Composer** enables you to combine files of different types, such as Word files, Excel files and digital camera images into a single production ready document. Thumbnails make it easy to reorder pages or add a cover page. You can even overlay headers and footers for a consistent look throughout the document.

Enhance your workflow and maximize productivity with Sharp's complete network scanning solution.

**SHARP**®

# Scanning Specifications

Sharp Digital IMAGER	AR-M208/235/275	AR-M280/M350/M450	AR-287/337/407/507	AR-651/810
<b>Scanning Option Model</b>	AR-NS2 <sup>1</sup>	AR-NS2 <sup>2</sup>	AR-NS1 <sup>3</sup>	AR-SB1 <sup>4</sup>
<b>Speed</b>				
Print: (pages per minute)	20/23/27 ppm	28/35/45 ppm	28/33/40/50 ppm	65/81 ppm
Scan: (originals per minute)	20/23/27 opm	45 opm	28/28/34/47 opm	65 opm
<b>Resolution</b>				
Scan:	400 dpi	600 dpi	400 dpi	600 dpi
Output:	200/300/600 dpi	200/300/400/600 dpi	200/300/600 dpi	150/300/600 dpi
<b>File Format</b>				
File type:	PDF/TIFF	PDF/TIFF/TIFF-F <sup>5</sup>	PDF/TIFF	PDF/TIFF
Compression mode:	NONE/MH (G3)/MMR (G4)	NONE/MH (G3)/MMR (G4)	NONE/MH (G3)/MMR (G4)	Automatically Optimized
<b>Maximum Original Size</b>	11" x 17"	11" x 17"	11" x 17"	11" x 17"
<b>Duplex Scan</b>	Yes	Yes	Yes	Yes
<b>Page Order</b>	1 → N	1 → N	1 → N	1 → N
<b>Multi-Page Scan File Split</b>	Single/Multiple	Single/Multiple	Single/Multiple	Single Only
<b>Scan Destinations</b>	Send to E-mail Send to Desktop Send to FTP Send to Fax <sup>6</sup>	Send to E-mail Send to Desktop Send to FTP Send to Fax <sup>6</sup> Send to Internet-Fax <sup>6</sup> Send to Group <sup>6</sup>	Send to E-mail Send to Desktop Send to FTP	Send to E-mail Send to Mailbox Send to Stored Job Send to Hold Queue Pull to Desktop Pull to FTP
<b>Management System</b>	Imager Home Page <sup>7</sup>	Imager Home Page <sup>7</sup>	Imager Home Page <sup>7</sup>	Fiery WebTools/ Device WebPage
<b>Scanning Standard Supported</b>	TWAIN	TWAIN	TWAIN	TWAIN
<b>Supported Mail System</b>	SMTP <sup>8</sup> Compliant Systems	SMTP <sup>8</sup> Compliant Systems	SMTP <sup>8</sup> Compliant Systems	SMTP <sup>8</sup> Compliant Systems
<b>One Touch Keys (Max)</b>	200	500 <sup>9</sup>	100	Limited by Hard Disk Capacity
<b>Network Connectivity</b>	Ethernet 10/100	Ethernet 10/100	Ethernet 10/100	Ethernet 10/100
<b>Network Protocol</b>	TCP/IP	TCP/IP	TCP/IP	TCP/IP
<b>Sharpdesk Licenses<sup>10</sup></b>	10 User Licenses	10 User Licenses	10 User Licenses	Sold Separately <sup>11</sup>

<sup>1</sup> Requires Printer Expansion Kit AR-P11, 128 MB RAM, and AR-NC5J Print Server Card (Ethernet 10/100 base TX). Standard on AR-N275.

<sup>2</sup> Requires AR-NC5J Print Server Card (Ethernet 10/100 base TX), which is standard on the AR-M280N, AR-M350N, and AR-M450N. AR-M280U, AR-M350U and AR-M450U also require AR-P14 Network Print Kit.

<sup>3</sup> Requires Printer Expansion Kit AR-PB2A, 48 MB RAM, and AR-NC3D Print Server Card (Ethernet 10/100 base TX).

<sup>4</sup> Requires Printer Expansion Kit AR-P15 and AR-PK3 (PostScript 3 Expansion Kit w/ 10 GB Hard Disk).

<sup>5</sup> The file format for Internet-Fax is automatically set to TIFF-F. Compression mode selections are MH (G3) and MMR (G4).

<sup>6</sup> Requires optional Facsimile Expansion Kit.

<sup>7</sup> IMAGER Home Page can be viewed by using Internet Explorer 4.0 or later, Netscape Navigator 4.0 or later.

<sup>8</sup> Simple Mail Transfer Protocol

<sup>9</sup> These 500 also include group destinations. If facsimile functionality is enabled, then the 500 auto-dial locations also include fax destinations. Combined maximum of 100 one-touch keys can be used for Send to Desktop and Send to FTP.

<sup>10</sup> Additional Sharpdesk Licenses sold separately in increments of 1, 5, 50 or 100 licenses.

<sup>11</sup> Sharpdesk requires Fiery Remote Scan 5 to acquire scanned document from AR-651/810.

# Sharpdesk 3.0 Specifications

<b>Document/Image Input Methods</b>	Sharp Digital IMAGERS with Network Scanning enabled: Any TWAIN 32-compliant Scanner	<b>Supported Languages</b>	English (US and British), French, Italian, German, Spanish, Swedish, Dutch
<b>Network Scanner Tool**</b>	Enables automatic and direct transfer of scanned image/document from Sharp Digital IMAGER to workstations	<b>Output Methods</b>	E-mail attachment (in original format, or SDF* file from Sharpdesk Composer), OCR, format conversion (Sharpdesk Imaging: TIFF, JPEG, BMP, AWD, etc.)
<b>Viewing and Document Management</b>	<b>Folder:</b> Tree hierarchy (Windows® Explorer-like) <b>Document:</b> Thumbnail with preview file format icons (BMP, TIFF, JPEG, DOC, XLS, PPT, etc.; over 200 file formats supported)	<b>Minimum System Requirements</b>	
<b>Search</b>	Full text and file property search; Supports up to 35 file formats; Create up to 20 unique indexes; Automatic index updates	<b>CPU</b>	At least 300 MHz Pentium or equivalent (500 MHz or better recommended)
<b>Page (section) Operations</b>	Add, delete, paste, move, copy, de-speckle, crop, straighten page, and undo for image files	<b>Main Memory</b>	Windows 98/ME: Minimum 64 MB (128 MB recommended) Windows NT/2000: Minimum 64 MB (128 MB recommended) Windows XP: Minimum 128 MB
<b>Annotation</b>	Copy (cut) and paste portion of page, save text, line art, rectangle, hyperlink, initials, notes, highlighting, freehand drawing, stamp, display/hide annotations for viewing and printing image files	<b>Operating System</b>	Windows XP Professional/Home Edition Windows 98 or Millennium Windows NT® 4.0 (SP6) or 2000 (English version)*** Internet Explorer 5.5 or later Installed TCP/IP network
		<b>Hard Disk Free Space</b>	110 MB application footprint 500 MB free hard drive space recommended
		<b>Display</b>	800 x 600 or higher resolution, at least 256 colors (True Color recommended)

\* SDF Composer file — a Sharp-original format that can be converted to PDF.

\*\* Network Scanner Tool is a check-off option while installing Sharpdesk. NST does not support the AR-651/810.

\*\*\* OS version with minor updates after release may not be compatible with some versions of Sharpdesk.

Design and specifications subject to change without notice.

Sharp is a registered trademark of Sharp Corporation. All other trademarks, trade names, service marks, and logos referenced herein belong to their respective companies.



**SHARP ELECTRONICS CORPORATION**  
Network Office Systems Group  
Sharp Plaza, Mahwah, NJ 07430-1163  
1-800-BE-SHARP • www.sharppusa.com